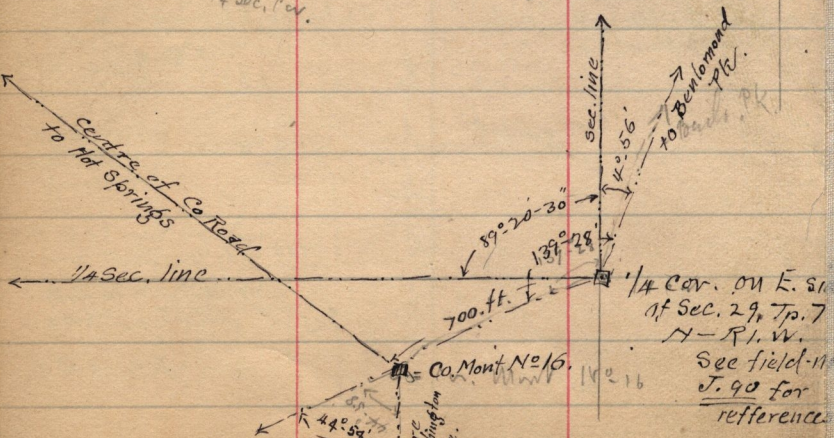
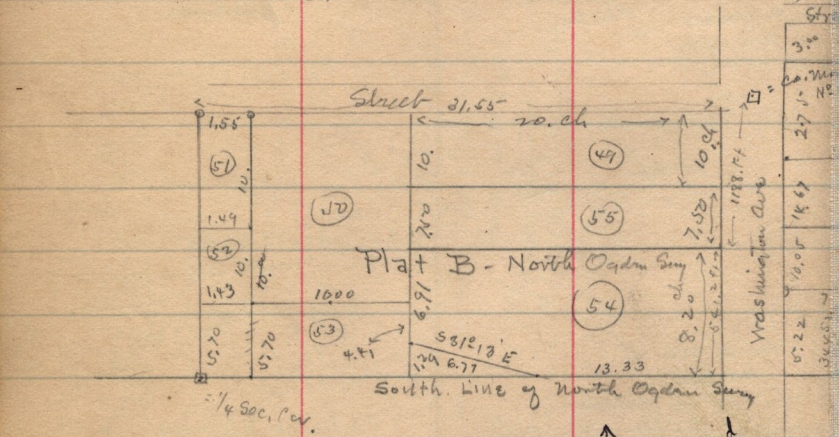


M.W. Cor. Sec. 2, 6, 7, 7, N - R. 1, W.

17-561 - John Montgomery to Electa A. Montgomery -  
 Pt. S.E.  $\frac{1}{4}$  Sec. 32, T. 7, N - R. 1, W. Bsq. 8.50 ch W. ang.  
 19.30 ch S. of S.E. cor  $\frac{1}{4}$  - N 5 ch. - W 16.50 ch - S 10.00 ch  
 E. 6.50 ch - N 5.50 ch - E. to cor.

2 D. 432 - Jas. Montgomery & Elizabeth Montgomery nty to Geo. Swoboda  
 Pt. S.E.  $\frac{1}{4}$  Sec. 32, - T. 7, N - R. 1, W. Bsq. in center of Washington  
 area, on N. line ad/4 - S 15 rods - N. W. line. 82 rods.  
 E. to cor.

Also pt Lot 54-B, North Cedar Sew. Bsq. at S.E. cor,  
 rd Lot - N 2.70 ch. - W 20 ch. - S 1.4 ch.  
 S 31' 13" E, 6.77 ch - E 13.33 ch - S. cor.



1/4 cor on W. line

1/4 cor. on E. cor of Sec. 29, Tp. 7 N - R. 1, W. See field notes J. 90 for reference